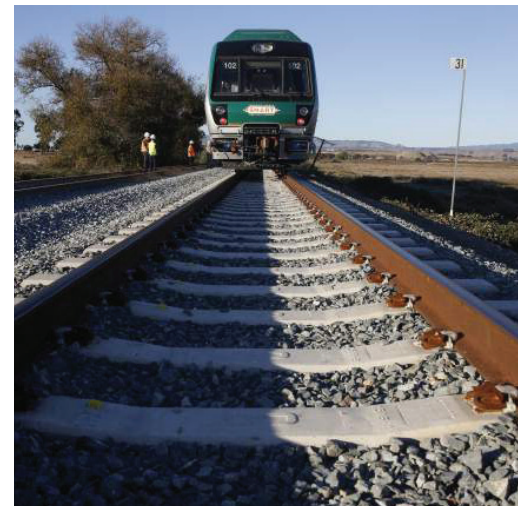


Billions of dollars at stake for transportation in California gas tax repeal effort



Motorists drive southbound on Highway 101 as wheel tractor-scrapers, at right, grade the soil in the highway median, south of Petaluma, California, on Wednesday, May 30, 2018. (Alvin Jornada / The Press Democrat)



The SMART train sits stopped on the tracks during testing along a section of track through "The Narrows" in Novato, on Tuesday, November 3, 2015. (BETH SCHLANKER/ The Press Democrat)

By Kevin Fixler,

The sharpest statewide political battle this November will be fought over California's still-new gas tax, with billions of dollars for road and transit upgrades at stake in a repeal measure that has now earned a place on the ballot.

Leading Republicans in the state, including gubernatorial candidate John Cox, are supporting the repeal, while Democrats are staunchly opposed. The two camps, including their proxies and allies, are expected to dump millions of dollars into swaying voters' decision on the ballot initiative.

If approved, it would roll back a tax increase signed into law last year by Gov. Jerry Brown as part of plan to raise approximately \$52 billion for transportation fixes through higher fees at the pump and other charges.

At stake for Sonoma County is more than \$170 million for regional projects such as the Highway 101 widening, fixes to traffic-clogged Highway 37 and northward expansion of the SMART commuter rail line.

Additionally, upwards of \$19 million in annual city and county road improvement dollars would be lost if voters back the repeal, according to local transportation officials.

"It is everywhere in the region that will be affected," said Supervisor David Rabbitt, who is closely tied into the North Bay's transportation issues. He and other local officials — nearly

all Democrats — have signaled they will come out swinging against the repeal in whatever capacity they can.

"It's literally every road, and paving of neighborhood roads, too," Rabbitt said. "It would be foolish to go down that route. Our infrastructure will go to hell and we won't see any improvement if that's the case."

But California's GOP leaders, who've seen their party repeatedly shut out in statewide elections, sense they may have a winning strategy, appealing to a tax-sensitive electorate in a state where the cost of living continues to soar.

Tim Hannan, a registered Republican and president of the Sonoma County Taxpayers' Association, said those higher costs, fueled in part by taxes, continue to drive working families out of the state. He plans to vote in favor of the gas tax repeal after what he said was a history of seeing funds dedicated to California's crumbling infrastructure spent elsewhere.

"I like the idea of repealing the gas tax," Hannan said, speaking on his own behalf because the taxpayers' association has not weighed in on the measure. "California government needs to do a better job setting its priorities and budgeting more carefully. So we need an alternative, and the initiative serves that purpose. If the voters decide one particular way, they have to be honored."

■ Continued on page 3

SBE OUTREACH SERVICES

With 1.5 million businesses in our database, SBE is California's #1 source for diversity outreach.

Advertisements

Placed in the Small Business Exchange newspaper, SBE Today newsletter, and online at www.sbeinc.com

Faxed and Eblast Solicitations

Targeted mailings sent to businesses per your criteria.

Telemarketing

Telephone follow-up calls that follow a script of 5 questions you create.

Computer Generated Reports

Will fit right into your proposal, along with a list of interested firms to contact.

Contact Info:

795 Folsom Street, 1st Flr, Room 1124
San Francisco, CA 94107
Email: sbe@sbeinc.com
Website: www.sbeinc.com
Phone: (415) 778-6250, (800) 800-8534
Fax: (415) 778-6255

Publisher of
Small Business Exchange
weekly newspaper



California Sub-Bid Request Ads



BROSAMER & WALL, INC.

An Equal Opportunity Employer is requesting quotations from all qualified DBE Professional services, Sub-contractors, Material suppliers, and Trucking for the following project:

Contract No. 06-0Q2804

RECONSTRUCT LANES AND SHOULDERS WITH CRCP, MODIFYING ELECTRICAL SYSTEM

CONSTRUCTION ON STATE HIGHWAY IN KERN COUNTY IN BAKERSFIELD ON ROUTE 99 FROM 0.3 MILES SOUTH OF PALM AVENUE OVERCROSSING TO BEARDSLEY CANAL BRIDGE AND ON ROUTE 178 AT ROUTE 99/178 SEPARATION.

Bid Closing Date: August 7, 2018 @ 2:00 PM

Please come meet the B&W Team at the Mandatory Pre-bid July 19th @ 10:00 am
1824 Norris Rd., Bakersfield, CA

DBE GOAL: 16%

CONTACT:

Robert Rosas
Brosamer & Wall Inc.
1777 Oakland Blvd, Suite 300 • Walnut Creek, California 94596
PH: 925-932-7900 FAX: 925-279-2269

PROJECT SCOPE:

Brosamer & Wall Inc., is requesting quotes from all qualified subcontractors and suppliers including certified DBE firms for all items of work type, including but not limited to:

- | | | |
|--|-----------------------------------|---------------------------------------|
| • AC DIKE | • EROSION CONTROL | • REMOVE CULVERT |
| • AGGREGATE BASE & ASPHALT PAVING | • FENCE | • REMOVE/ADJUST INLETS |
| • AGGREGATE SUPPLY | • GROUND ANCHOR - SUBHORIZONTAL | • ROADSIDE SIGNS |
| • ASPHALT OIL SUPPLY | • IMPORT BORROW | • ROCK SLOPE PROTECTION |
| • CLEAR AND GRUB | • IRRIGATION - PERM & TEMP | • SAW CUT GREENSAW |
| • CONCRETE AGGREGATE SUPPLY | • JOB SITE MANAGEMENT | • SHOTCRETE |
| • CONCRETE BARRIER TYPE 26A | • JOINT SEAL | • SIGN STRUCTURES |
| • CONCRETE BARRIER TYPE 60 | • JOINTED PLAIN CONCRETE PAVEMENT | • STREET SWEEPING |
| • CONCRETE CEMENT SUPPLY | • K-RAIL | • STRUCTURE CONCRETE - RETAINING WALL |
| • CONCRETE PAVEMENT MATERIALS | • LANDSCAPE | • SURVEYING |
| • CONSTRUCTION AREA SIGNS | • LEAD COMPLIANCE PLAN | • SWPPP |
| • CONTINUOUSLY REINFORCED CONCRETE PAVEMENT (CRCP) | • METAL BEAM GUARD RAIL | • TEMPORARY STRIPING |
| • DEMOLITION | • MINOR CONCRETE | • TRAFFIC CONTROL |
| • DRILL AND BOND DOWELS | • PERMANENT STRIPING/MARKING | • TRUCKING |
| • EARTHWORK/GRADING/RDWY EXC. | • REBAR | • UNDERGROUND - STORM DRAIN |
| • ELECTRICAL | • REMOVE CONCRETE PAVEMENT | |

For the complete list of the Actual Project Bid Items go to:

<http://www.dot.ca.gov/des/oe/weekly-ads/oe-biditems.php?q=06-0Q2804>

Requirements: Brosamer & Wall, Inc. will work with interested subcontractors/suppliers to identify opportunities to break down items into economically feasible packages to facilitate DBE Participation. Brosamer & Wall, Inc. is a union signatory contractor. Subcontractors must possess a current contractor's license, insurance coverage and worker's compensation for the entire length of the contract.

All subcontractors will be required to sign our standard Subcontract Agreement. 100% payment and performance bonds may be required. If you have any questions regarding this project or need assistance in obtaining/waiving insurance, bonding, equipment, materials and/or supplies please call or email Robert Rosas contact information below.

Plans and specifications can be viewed at our office located at 1777 Oakland Blvd Suite 300, Walnut Creek, Ca. 94596 or at no cost from Caltrans website. B&W will also make plans electronically please email rrosas@brosamerwall.com for free online link. Brosamer & Wall INC., intends to work cooperatively with all qualified firms seeking work on this project. If you are interested in submitting a subcontractor bid for this project, you may contact Robert Rosas Chief Estimator at 925-932-7900 or fax us your quote at 925-279-2269. PLEASE SUBMIT A COPY OF YOUR CURRENT DBE CERTIFICATION WITH YOUR BID. Subcontractors, Dealers/Suppliers and Brokers please provide your designation code to us on or before the bid date. B&W, INC., IS AN EQUAL OPPORTUNITY EMPLOYER.

Pacific Structures is seeking qualified and certified
MBE/WBE/SBE/LBES

Subcontractors, Suppliers, for the project below:

160 Folsom- 40 Story Condominium

Location: 160 Folsom, San Francisco, CA 94105

Bid Due Date: September 1, 2018

Description of work:

Pumping/ Placing/ Finishing for Pads, Curbs, and Built-up Slabs

Pacific Structures

3004 16th Street • San Francisco, CA 94103

Phone: (415) 606-3572

Contact: Natalie Besser

Email: Natalie.Besser@pacific-structures.com

An Equal Opportunity Employer

**REQUEST FOR CERTIFIED SBE
SUBCONTRACTORS, SUPPLIERS &
TRUCKERS FOR:**

**Uvas Creek Levee Rehabilitation Project Phase 1
(Miller Avenue to end of levee)**

Santa Clara Valley Water District

Contract No. C0643

Gilroy, Santa Clara County

Bid Date: August 8, 2018 @ 2:00 PM

Work types requested, but are not limited to, the following: **Chain Link Fabric Mesh, Clearing and Grubbing, Construction Materials, Hydroseeding, Landscaping, Storm Water Pollution Prevention Plan, Traffic Control, Tree Removal, and Trucking.**

Plans and Specifications are available for review at our office, or can be downloaded from www.valleywater.org/construction

Call Serina Sima for assistance in obtaining bonds, line of credit, insurance and scheduling accommodations.

Gordon N. Ball, Inc.

Attn: Serina Sima

333 Camille Ave., Alamo, CA 94507

Phone: (925) 838-5675 • Fax: (925) 838-0814

estimating@ballconco.com

An Equal Opportunity Employer



Graniterock

5225 Hellyer Avenue, Suite #220

San Jose, CA 95138

Phone (408) 574-1400 Fax (408) 365-9548

Contact: Paul Brizzolara

Email: estimating@graniterock.com

**REQUESTING SUB-QUOTES FROM
QUALIFIED SBE Firms SUBCONTRACTORS/
SUPPLIERS/TRUCKERS FOR:**

**Uvas Creek Levee
Rehabilitation Project, Phase I**

Contract No. C0643

**Owner: Santa Clara Valley Water District
Engineers' Estimate: \$4,500,000.**

BID DATE: August 8, 2018 @ 2:00 PM

Items of work include but are not limited to: Survey, SWPPP, Temporary Construction Fence, Chain Link Fabric Mesh, Hydroseeding, Levee Excavation, Tree Removal and Trucking.

Granite Rock Company 'Graniterock' is signatory to Operating Engineers, Laborers, Teamsters, Carpenters and Cement Masons unions. 100% performance and payment bonds will be required from a qualified surety company for the full amount of the subcontract price. Bonding assistance is available. Graniterock will pay bond premium up to 1.5%. In addition to bonding assistance, subcontractors are encouraged to contact Graniterock Estimating with questions regarding obtaining lines of credit, insurance, equipment, materials and/or supplies, or with any questions you may have. Subcontractors must possess a current contractor's license, DIR number, insurance and worker's compensation coverage. Subcontractors will be required to enter into our standard contract. Graniterock intends to work cooperatively with all qualified firms seeking work on this project.

We are an Equal Opportunity Employer



California Sub-Bid Request Ads

PROJECT: State Highway in Kern County Route 99, Bakersfield, CA
 Project # 06-0Q2804
OWNER: CALTRANS – DBE GOAL 16%
BID DATE: AUGUST 7TH, 2018 **BID TIME:** 2:00 P.M.
****Please respond by 5:00 p.m., AUGUST 6ST, 2018****

Coffman Specialties, Inc. (CSI) is requesting quotes from all qualified subcontractors and suppliers for the following items of work, including but not limited to:

- TRUCKING / IMPORT BORROW
- EQUIPMENT RENTAL
- LEAD COMPLIANCE PLAN / ADL WORK
- SWPPP / WPC
- SURVEY / QC
- CONSTRUCTION AREA & ROADSIDE SIGNS
- PAVEMENT MARKING / STRIPING
- TRAFFIC CONTROL
- WATER TRUCK
- EARTHWORK / GRADING / ROADWAY EXCAVATION
- EROSION CONTROL
- METAL BEAM GUARD RAIL (MBGR) / FENCING
- K RAIL
- CONCRETE SAWCKET & SEALING
- STREET SWEEPING
- REBAR
- CONCRETE / MINOR CONCRETE
- ASPHALT / ASPHALT PAVING / ASPHALT DIKE
- COLD PLANING / PULVERIZING
- CLEAR & GRUB
- ELECTRICAL
- LANDSCAPING
- ROCK SLOPE PROTECTION
- STORMDRAIN / UNDERGROUND UTILITIES
- AGGREGATE SUPPLY / AGGREGATE BASE
- DEMOLITION / BRIDGE REMOVAL
- CONCRETE BARRIER

Coffman Specialties, Inc. is signatory to Operating Engineers, Laborers, Teamsters, Cement Masons and Carpenters unions. Quotations must be valid for the same duration as specified by the Owner for contract award. Insurance and 100% Payment & Performance Bonds will be required, and will pay up to 1.5% for the cost of the bond. Waiver of Subrogation will be required. We will provide assistance/advice with obtaining Bonds/Insurance/Credit/Equipment/Materials and/or supplies. ****Subcontractors must provide a current contractor's license number and Department of Industrial Relations (DIR) current registration number with their quote.**

Plans and specs are available at no cost to interested firms. Please contact our office @ (858) 536-3100, email us: estimating@coffmanspecialties.com or you can visit our San Diego Office. We are an EOE & seriously intend to negotiate with qualified firms.

**Please send quotes via email to estimating@coffmanspecialties.com or via fax to (858) 586-0164

If you have any questions or need further information, please contact Gus Rios or Marty Keane @ (858) 536-3100



9685 Via Excelencia, Ste 200 • San Diego, CA 92126

Phone: (858) 536-3100 • Bid Fax: (858) 586-0164 • e-mail inquiries to: estimating@coffmanspecialties.com



O.C. Jones & Sons, Inc.
 1520 Fourth Street • Berkeley, CA 94710
 Phone: 510-526-3424 • FAX: 510-526-0990
 Contact: Greg Souder

**REQUEST FOR DBE
 SUBCONTRACTORS AND SUPPLIERS FOR:**

**Cold plane, place HMA & RHMA,
 replace railings & signs
 Hwy 128 Mendocino County
 Caltrans #01-415504**

BID DATE: August 1, 2018 @ 2:00 PM

We are soliciting quotes for (including but not limited to):

Trucking, Lead Compliance Plan, Construction Area Signs, Traffic Control System, Portable Changeable Message Sign, WPCP, Treated Wood Waste, Clearing & Grubbing, Crack Treatment, Preparing Inertial Profiler, Preparing Grinding, Geosynthetic Pavement Interlayer (Paving Grid), Data Core, Tack Coat, Cold Plane AC, Guard Railing Delineator, Pavement Marker, Object Marker, Roadside Signs, Midwest Guardrail System, Vegetation Control (Minor Concrete), Vegetation Control MAT, HMA Testing, Concrete Barrier, Striping & Marking and Construction Materials

An Equal Opportunity Employer

100% Performance & Payment Bonds may be required. Worker's Compensation Waiver of Subrogation required. Please call OCJ for assistance with bonding, insurance, necessary equipment, material and/or supplies. OCJ is willing to breakout any portion of work to encourage DBE Participation. Plans & Specs are available for viewing at our office or through the Caltrans Website at www.dot.ca.gov/hq/esc/oe/weekly_ads/index.php.

Billions of dollars at stake for transportation in California gas tax repeal effort

Continued from page 1

The tax increase at issue, Senate Bill 1, passed the Legislature last year virtually along party lines, with Democratic backers hailing it as a major victory for ailing road infrastructure and mass transit lines.

After the new taxes took effect last November, conservative opponents, including Cox, the GOP nominee for governor, soon began collecting signatures to challenge the law. Support poured in from national party leaders, including U.S. House Majority Leader Kevin McCarthy, R-Bakersfield, who helped fund the initiative campaign.

For Brown, who finishes his last term in January, the fight is for the future of one of his chief accomplishments — a funding stream to help modernize California's aging transportation network. Lt. Gov. Gavin Newsom, the Democrat running to succeed him, opposes the repeal because it would defund safety upgrades to the state's transportation infrastructure, according to a spokesman with his campaign.

Senate Bill 1 included fee increases at the pump of 12 cents per gallon of gas, and 20 cents per gallon of diesel. It included an additional 4 percent tax hike on diesel and a new vehicle fee, effective this year, that ranges from \$25 to \$175 depending on value. A \$100 charge on zero-emission vehicles is set to start July 1, 2020, and fees at the pump will continue to rise based on inflation beginning at that date.

Repeal proponents calculate the current charges amount to an additional \$500 to \$700 tax burden per year on a family of four based on how much they drive. Their proposed rollback is part of what they're calling a three-step plan to fund the state's road projects with gas and vehicle taxes that predate the current charges — at 30 cents per gallon of gas, and 36 cents per gallon of diesel.

"The reality is there's more than enough money in existing gas taxes to fund these projects," said Carl DeMaio, a Republican and former San Diego councilman who is chairman of the polit-

ical action committee Reform California that is spearheading the proposed repeal. "We already pay a sufficient amount of taxes to fix roads and sustain the transportation system. The skyrocketing cost of living is untenable."

The first step of their plan, according to DeMaio, was the recall in June of state Sen. Josh Newman, D-Fullerton, a key vote in passing SB 1. The second step is repealing the gas tax, and the third, DeMaio said, will be a replacement measure to appear on the 2020 ballot for funding the state's infrastructure through existing taxes.

Advocates for maintaining SB1 point to the overwhelming passage in June of Proposition 69, which prohibits new gas tax revenues from being diverted to other purposes outside of transportation.

Locally, the funding source is crucial to the planned expansion of the North Bay's SMART commuter rail, which secured a \$21 million

Continued on page 6



California Sub-Bid Request Ads



Sukut Construction seeks quotes from certified & qualified DBE/SBE/MBE/WBE/SBRA/LSAF/HUB Subcontractors, Suppliers, and Service Providers for the following (but not limited to) work:

SWPPP, Fence & Gates, Concrete Structures, Drainage Structures, Electrical, Chlorination & Testing, Concrete Flat Work, Rebar, AC Paving, Submersible Well Pumps, Aggregates, CML/C, DIP, C-900 PVC Pipe, Fiberglass Tank

PIONEERTOWN PIPELINE PROJECT

CSA 70, ZONE W4

on

HDWD Well 2w site nearest 55914 Sunland Drive, Yucca Valley, CA.

for

County of San Bernardino

County Service Area 70, Zone W4, Pioneertown, CA

Project No.: 1Z27

BID DATE: August 15, 2018 @ 2:00 p.m.

Sub & Vendor Bids Due Prior

Sukut Construction, LLC

4010 W. Chandler Avenue, Santa Ana, CA 92704

Contact: Rick Welshiener

Phone: (714) 540-5351 • Fax: (714) 545-2003 • Email: estimating@sukut.com

Plans/specs are available for viewing at our office by appointment, or via Sukut FTP. Subcontractors must be prepared to furnish 100% performance and payment bonds and possess current Contractor's License, DIR registration, insurance and workers' comp coverage. Sukut Construction will assist qualified subcontractors in obtaining bonds, insurance, and/or lines of credit. Subcontractors/Vendors will be required to sign Sukut's Standard Subcontract/Purchase Order. Copies are available for examination. Please contact Sukut Construction for assistance in responding to this solicitation.

Sukut Construction's listing of a Subcontractor in its bid to the agency is not to be construed as an acceptance of all of the Subcontractor's conditions or exceptions included with Subcontractor's price quotes. Quotations must be valid for the same duration as specified by Owner for contract award.

Sukut Construction, LLC
An Equal Opportunity Employer

AECOM Energy & Construction, Inc.

1 Harbor Center, STE 200 • Suisun City, CA 94585

Phone (707) 759-6858 • Fax (510) 777-5099

MBE/WBE/LSB (Local Small Business) Subcontractor/Supplier Bids Requested For:

San Francisco Bay Area Rapid Transit District

M-Line Tunnel Lighting Upgrade

Contract No. 15AA-110

Bid Date: August 21, 2018 at 2:00PM

Fax all quotes to 510-777-5099

Requesting certified MBE/WBE and LSB (DGS Certified Small Businesses whose principal place of business is within Alameda, Contra Costa, or San Francisco Counties) Subcontractor and Supplier Quotes on: **Electrical Installation, Electrical Testing, Quality Control, Lighting Fixtures, Low Smoke Zero Halogen Wire/Cable, Electrical Equipment; Panels and Transformers**

Subcontractors and Suppliers interested in this project may contact Greg Adams by email at greg.adams2@aecom.com.

100% Performance and Payment bonds with a surety company subject to approval of AECOM Energy & Construction, Inc. are required of subcontractors for this project. AECOM Energy & Construction, Inc. will pay bond premium up to 1.5%. Subcontractors will be required to abide by terms and conditions of the AGC Master Labor Agreements and to execute an agreement utilizing the latest AECOM Long Form Standard Subcontract incorporating prime contract terms and conditions, including payment provisions. AECOM Energy & Construction's listing of a Subcontractor is not to be construed as an acceptance of all of the Subcontractor's conditions or exceptions included with the Subcontractor's price quote. AECOM Energy & Construction requires that Subcontractors and Suppliers price quotes be provided at a reasonable time prior to the bid deadline to enable a complete evaluation. For assistance with bonding, insurance or lines of credit contact Scott Fairgrieve at (510) 777-5000.

An Equal Opportunity Employer

Small Business Exchange

The Sub-Bid Request Specialist

It's takes a sharp pencil and qualified, competitive sub-contractors, vendors, and suppliers to win the bid and achieve the diversity goals.

Look no further. We have them all in our database

Need construction contractors and suppliers familiar with public contracting, bondable, certified by cities, states and federal entities, and willing to work in one or many locations? *We have that, too.*

Want to reach them by industry-specific codes (NAIC/SIC/UNSPSC)? *We can do that, too*

The next time you're bidding project where time and accuracy are of the essence, call us. *We'll make it happen.*

We are on the move to make your business better.

Call 1-800-800-8534



Warriors Basketball Arena Stays in Lead at Halftime



Chase Center arena's many elevated decks and the site's multiple grade changes required three 1,000-cu-yd concrete pours a week that had to work around nearby medical students' final exams.

PHOTO COURTESY OXBLUE

By *Christine Kilpatrick*,

The Golden State Warriors' game plan to build an 18,500-seat arena and mixed-use development in San Francisco looks tougher than a three-pointer at the buzzer.

The \$1-billion project is more than halfway through construction, filling an 11-acre site hemmed in by dense development, including the Mission Bay campus and hospital of the University of California, San Francisco. The Chase Center arena, office towers and retail and parking structure sit at various depths in mud and fill from the city's 1906 earthquake, just a few hundred feet from the bay. A structural concrete slab and 1,500 piles drilled into bedrock protect the arena and surrounding buildings from water, settling soil and seismic forces.

Construction began in January 2017 on the privately funded project, which includes the approximately 1-million-sq-ft arena and two 10-story office towers as well as 100,000 sq ft of retail. Managed by joint venture partners Clark Construction Group and Mortenson Construction, the project has completed 1.5 million craft hours, with 900 workers currently on site and a projected 8,000 workers overall. The arena itself is built around four 120-ft-tall con-

crete cores topped by a 350-ft long-span roof held up by four main 500,000-lb steel trusses. Magnusson Klemencic Associates (MKA) was the project's structural engineer.

The team's 200-page monthly playbook for the design-assist project is a race to the roof, aiming to install the trusses as quickly as possible. The arena itself is sliced into sections, with each quadrant on a different mini-schedule to finish concrete, steel and other construction. It's a demanding schedule, says Peter Bryan, the Warriors' vice president of construction and development, but it is necessary to complete the project in time for the start of the 2019-2020 NBA season.

"Mortenson-Clark has orchestrated a pretty amazing dance out there, when you consider all the craftspeople, all the deliveries, all the equipment," Bryan says. "Unlike an office building or other types of development, when we set our end date for a start of season, that's fixed."

Design As You Go

The challenges surrounding the Chase Center development began with the site, as designers pondered how to arrange the arena, towers,

plaza and parking on the limited area, says David Manica, president of Manica Architecture, the design architect. The variable bay mud complicated any excavation for underground structures, yet San Francisco's strict height limits helped keep the arena and towers at 135 ft and 160 ft high, respectively.

"We were given a space that was about the size of four city blocks, and the soil conditions were quite poor there," Manica says. "All the street edges had to be active and interesting and a front door. There wasn't going to be a big fence along one edge of the site where all the trucks would come in and all the trash would come out."

The answer was a 1,000-stall, two-story underground parking structure and a single underground entrance and loading dock for trucks. "It was a complicated, three-dimensional puzzle that we solved to separate all the services and parking from all the wonderful outdoor plazas and retail areas," Manica says.

Wind patterns also influenced the site's layout. "We could not create windstorms or tunnel effects that would cause wind coming from the northwest corner of the site to increase," Manica says.



California Sub-Bid Request Ads

DRAGADOS

3200 Park Center Dr., Suite 600 | Costa Mesa, CA 92626
 Bid Manager: Pablo Moreno
 TEL: (657) 229-7800 | pmoreno@dragados-usa.com
 Outreach: Arinda Cale
 TEL: (949) 239-2431 | acale@dragados-usa.com
 Equal Opportunity Employer

Invitation to Bid

Subcontractors, Vendors, Material Suppliers, and Professional Services for:

JOINT WATER POLLUTION CONTROL PLANT EFFLUENT OUTFALL TUNNEL

OWNER: County Sanitation District No. 2
LOCATION: Los Angeles, California
OUR QUOTE DEADLINE: September 13, 2018, COB
BID DEADLINE: September 17, 2:00pm

M/WBE Participation is encouraged

Plans and Specifications are available free of charge

Quotes for Services & Supplies requested for the following items for bid including, but not limited to:

AC PAVING	FENCE & RAIL	SWPPP
AMENITIES	HAULING & DISPOSAL	TRAFFIC SIGNAL
BARRIER	INSTRUMENTATION & CONTROL	PAINTING/COATINGS
CONCRETE FLATWORK	SURVEYING	RCP/PVC
CONCRETE TUNNEL LINER	TRAFFIC CONTROL	REBAR INSTALLATION
DEMOLITION	STEEL TUNNEL LINER	SAND & GRAVEL
SUPPORT OF EXCAVATION	LANDSCAPING	SIGN STRUCTURE
TESTING	LIME TREATMENT	SIGNING & STRIPING
VIBRATION MONITORING	MISC. STEEL	SITE RESTORATION
DEWATERING	NOISE MONITORING	TEMPORARY SOUNDWALL
ELECTRICAL	POTHOLING	TRUCKING
EROSION CONTROL	QA/QC	

Subcontractors must be registered in good standing with the California Department of Industrial Relations (DIR) prior to submitting a bid for work on this project.

100% performance and payment bonds may be required for the full amount of the subcontract price. Dragados will assist with obtaining bonding, lines of credit, and insurance. Please Contact Arinda Cale if assistance is needed with regards to bonding & Insurance.

Dragados will analyze and consider each quote received, including those that are broken down into economically feasible units to facilitate bidding.

Dragados is committed to ensuring that subcontractors and vendors have the maximum opportunity to successfully perform on this project, and to making good faith efforts to utilize small, minority, women, disadvantaged and local business enterprises.



SKANSKA • TRAYLOR • SHEA

Skanska-Traylor-Shea JV of 5055 Wilshire Blvd, Suite 700, Los Angeles, CA requests sub-bid quotes from certified DBE's for **RFP No. 058WS Street Sweeping & RFP No. 070WS LADWP Waterline at Western on the Westside Subway Extension Section 1 project.** Owner: LAC-MTA (Metro). Contract No. C1045 **Bid Date: August 15, 2018 at 2:00pm.**

Plans & Specs can be viewed at our office Monday - Friday 8am to 4pm (call for appointment) or downloaded free at the below links.

058WS Street Sweeping: <https://skanskausa.sharefile.com/i/i5def636a474469d9>

070WS LADWP Waterline: <https://skanskausa.sharefile.com/i/iidba2f4597fa426e9>

Should you have any questions or desire to quote on this project, please contact Teresa Maxwell, DBE Coordinator at 213.598.2237 or teresa.maxwell@skanska.com. Assistance in bonding, insurance, lines of credit or obtaining equipment, supplies and materials is available upon request. This advertisement is in response to Metro's DBE program. Skanska-Traylor-Shea JV intends to conduct itself in good faith with DBE firms regarding participation on this project. More info about this project is available at www.skanska-traylor-shea.com. Skanska-Traylor-Shea JV is an EEO/AA/Vet/Disability Employer.

Skanska-Traylor-Shea JV is an EEO/AA/Vet/Disability Employer.

SWINERTON



PROJECT NAME:

San Francisco Ambulance Deployment Facility

SFPW Contract Number: 1000006282

BID DATE: August 3, 2018 at 3:00 PM

Swinerton is requesting quotations from MBE's, WBE's and OBE's, certified with the City of San Francisco's Contract Monitoring Division. The project has a 20% LBE requirement. Subcontractors not certified as LBE's are encouraged to include Lower Tier Vendors/Suppliers that are Certified. Subcontractors must include a completed Proposed Subcontractors Form (including your California Department of Industrial Relations "DIR" Registration Number) with the Bid by 3:00 PM on August 3, 2018.

Building Construction Estimate: \$26.6 Million

Scopes: All Trades

Project Description:

Construction of a new, four-story, steel frame Ambulance Deployment Facility building at 2241 Jerrold Avenue, San Francisco, CA. Total building area, including the garage structure is approximately 44,244 GSF. More details about the Summary of Work are in the Specifications document, Section 01 11 00 - 1.

PLANS & SPECIFICATIONS:

<https://secure.smartbidnet.com/External/PublicPlan-Room.aspx?id=384814>

WE REQUEST BIDS FROM ALL SUBS.

Contact: John Collins

Tel: (415) 421-2980

EMAIL TO: JCollins@swinerton.com

Please submit your bid via SmartBid or by email.

"Swinerton is an Equal Employment Opportunity, Minority, Women, Disability, and Veteran Employer."

Billions of dollars at stake

Continued from page 3

commitment from the new funding to help expand north, starting with the town of Windsor.

"It would be disastrous for us," Debora Fudge, a Windsor City Council member and board chairwoman of SMART, said of the repeal. "Any SB1 money removed from SMART stalls the project, and right now there is no other (outside) funding. So it's important for anybody in Northern California to not support this repeal."

Future work on numerous North Bay road projects also hangs in the balance, including the Highway 101 widening project through the Sonoma-Marin Narrows, according to Suzanne Smith, executive director of the Sonoma County Transportation Authority.

"If the money goes away, you're not going to see any of them," Smith said. "At a minimum, it'll be least a decade, if ever. It takes years to get projects ready to go and delivered. To have it put in flux by this effort to repeal, it kind of puts the brakes on that. It's hugely disappointing."

SOURCE: <http://www.petaluma360.com>



California Sub-Bid Request Ads

DESILVA GATES CONSTRUCTION

11555 Dublin Boulevard • P.O. Box 2909
Dublin, CA 94568-2909
(925) 829-9220 / FAX (925) 803-4263
Estimator: **VICTOR LE / JACK SHEWMAKER**
Website: www.desilvagates.com
An Equal Opportunity Employer

DeSilva Gates Construction (DGC) is preparing a bid as a Prime Contractor for the project listed below:

CALTRANS ROUTE 5 – CONSTRUCTION ON STATE HIGHWAY IN SACRAMENTO COUNTY IN AND NEAR SACRAMENTO FROM 1.1 MILES SOUTH OF ELK GROVE BOULEVARD TO AMERICAN RIVER VIADUCT
Contract No. 03-0H10U4,
Federal Aid Project No. ACSB11M-005-6(349)E
Disadvantaged Business Enterprise Goal Assigned is 16%

OWNER:
STATE OF CALIFORNIA
DEPARTMENT OF TRANSPORTATION
1727 30th Street, Bidder's Exchange, MS 26,
Sacramento, CA 95816

BID DATE: AUGUST 9, 2018 @ 2:00 P.M.

DGC is soliciting quotations from certified Disadvantaged Business Enterprises, for the following types of work and supplies/materials including but not limited to:

AC DIKE, BIOLOGIST CONSULTANT, BRIDGE DECK RESURFACING, BRIDGE, CLEARING AND GRUBBING/DEMOLITION, CONCRETE BARRIER, CONSTRUCTION AREA SIGNS, CRACK & SEAT CONCRETE, ELECTRICAL, EROSION CONTROL, FABRIC/GEOSYNTHETIC PAVEMENT INTER-LAYER, FENCING, LIME TREATMENT, METAL BEAM GUARDRAIL, MINOR CONCRETE, MINOR CONCRETE STRUCTURE, PCC GRINDING, PCC PAVING, PUMP STATION, ROADSIDE SIGNS, SIGN STRUCTURE, SOIL NAIL, STRIPING, SWPPP/WATER POLLUTION CONTROL PLAN PREPARATION, TEMPORARY EROSION CONTROL, TRAFFIC CONTROL SYSTEMS, UNDERGROUND, VEGETATION CONTROL, TRUCKING, WATER TRUCKS, STREET SWEEPING, CLASS 2 AGGREGATE BASE MATERIAL, HOT MIX ASPHALT (TYPE A) MATERIAL, RUBBERIZED HMA (OPEN GRADE) MATERIAL.

Plans and specifications may be reviewed at our offices located at 11555 Dublin Boulevard, Dublin, CA or 7700 College Town Drive, Sacramento, CA, or at your local Builders Exchange, or reviewed and downloaded from the ftp site at <ftp://ftp%25desilvagates.com:f7pa55wd@pub.desilvagates.com> (if prompted the username is ftp@desilvagates.com and password is f7pa55wd) or from the Owner's site at www.dot.ca.gov/hq/esc/oe/weekly_adv/all_adv_projects.php

Fax your bid to (925) 803-4263 to the attention of Estimator Victor Le or Jack Shewmaker. If you have questions for the Estimator, call at (925) 829-9220. When submitting any public works bid please include your DUNS number and DIR number. For questions regarding registration for DIR use the link at: www.dir.ca.gov/Public-Works/PublicWorks.html

If you need DBE support services and assistance in obtaining bonding, lines of credit, insurance, necessary equipment, materials and/or supplies or related assistance or services, for this project call the Estimator at (925) 829-9220, or contact your local Small Business Development Center Network (<http://californiasbdc.org>) or contact the California Southwest Transportation Resource Center (www.transportation.gov/osdbu/SBTRCs). DGC is willing to breakout portions of work to increase the expectation of meeting the DBE goal.

At our discretion, 100% Payment and 100% Performance bonds may be required as a subcontract condition. This will be a PREVAILING WAGE JOB. DGC is an equal opportunity employer.

DESILVA GATES CONSTRUCTION

11555 Dublin Boulevard • P.O. Box 2909
Dublin, CA 94568-2909
(925) 829-9220 / FAX (925) 803-4263
Estimator: **JIM YACKLEY**
Website: www.desilvagates.com
An Equal Opportunity Employer

DeSilva Gates Construction (DGC) is preparing a bid as a Prime Contractor for the project listed below:

APRON RECONSTRUCTION PHASE III, IFB No. 173080
Disadvantaged Business Enterprise Goal Assigned is 11.2%

OWNER:
CITY OF PALO ALTO
Public Works Department, Airport Division
250 Hamilton Avenue, Palo Alto, CA 94301
BID DATE: AUGUST 6, 2018 @ 3:00 P.M.

DGC is soliciting quotations from certified Disadvantaged Business Enterprises, for the following types of work and supplies/materials including but not limited to:

ADJUST IRON, COLD PLANE, ELECTRICAL, HYDROSEEDING, JOINT SEAL, MINOR CONCRETE, PRIME OIL SUPPLIER, ROADWAY EXCAVATION, SAWCUTTING, SWPPP/WATER POLLUTION CONTROL PLAN PREPARATION, TEMPORARY EROSION CONTROL, UNDERGROUND, TRUCKING, WATER TRUCKS, STREET SWEEPING, FAA AGGREGATE BASE MATERIAL, HOT MIX ASPHALT (FAA) MATERIAL, ASPHALT OIL SUPPLIER, CEMENT TREATED SOIL.

Plans and specifications may be reviewed at our offices located at 11555 Dublin Boulevard, Dublin, CA or 7700 College Town Drive, Sacramento, CA, or at your local Builders Exchange, or reviewed and downloaded from the ftp site at <ftp://ftp%25desilvagates.com:f7pa55wd@pub.desilvagates.com> (if prompted the username is ftp@desilvagates.com and password is f7pa55wd) or from the Owner's site.

Fax your bid to (925) 803-4263 to the attention of Estimator Jim Yackley. If you have questions for the Estimator, call at (925) 829-9220. When submitting any public works bid please include your DUNS number and DIR number. For questions regarding registration for DIR use the link at: www.dir.ca.gov/Public-Works/PublicWorks.html

If you need DBE support services and assistance in obtaining bonding, lines of credit, insurance, necessary equipment, materials and/or supplies or related assistance or services, for this project call the Estimator at (925) 829-9220, or contact your local Small Business Development Center Network (<http://californiasbdc.org>) or contact the California Southwest Transportation Resource Center (www.transportation.gov/osdbu/SBTRCs). DGC is willing to breakout portions of work to increase the expectation of meeting the DBE goal.

At our discretion, 100% Payment and 100% Performance bonds may be required as a subcontract condition. This will be a PREVAILING WAGE JOB. DGC is an equal opportunity employer.

DESILVA GATES CONSTRUCTION

11555 Dublin Boulevard • P.O. Box 2909
Dublin, CA 94568-2909
(925) 829-9220 / FAX (925) 803-4263
Estimator: **GARRY DAY**
Website: www.desilvagates.com
An Equal Opportunity Employer

DeSilva Gates Construction (DGC) is preparing a bid as a Prime Contractor for the project listed below:

CALTRANS ROUTE 5 – CONSTRUCTION ON STATE HIGHWAY IN SHASTA COUNTY IN AND NEAR ANDERSON FROM ROUTE 5/273 SEPARATION TO 0.4 MILE SOUTH OF CHURN CREEK ROAD OVERCROSSING
Contract No. 02-4C40V4,
Federal Aid Project No. ACSB11M-005-8(359)E
Disadvantaged Business Enterprise Goal Assigned is 9%

OWNER: **STATE OF CALIFORNIA**
DEPARTMENT OF TRANSPORTATION
1727 30th Street, Bidder's Exchange, MS 26,
Sacramento, CA 95816

BID DATE: AUGUST 28th, 2018 @ 2:00 P.M.

DGC is soliciting quotations from certified Disadvantaged Business Enterprises, for the following types of work and supplies/materials including but not limited to:

AC DIKE, ADJUST IRON, ASBESTOS COMPLIANCE PLAN, BIOLOGIST CONSULTANT, BRIDGE DECK RESURFACING, AC DIKE, ADJUST IRON, ASBESTOS COMPLIANCE PLAN, BIOLOGIST CONSULTANT, BRIDGE DECK RESURFACING, BRIDGE, BRIDGE REMOVAL, CLEARING AND GRUBBING/DEMOLITION, COLD PLANE, CONCRETE BARRIER, CONSTRUCTION AREA SIGNS, ELECTRICAL, EMULSION SUPPLIER, EROSION CONTROL, FENCING, HYDROSEEDING, K-RAIL SUPPLIER, LANDSCAPING, LEAD COMPLIANCE PLAN, METAL BEAM GUARDRAIL, MINOR CONCRETE, MINOR CONCRETE STRUCTURE, ROADSIDE SIGNS, ROADWAY EXCAVATION, SIGN STRUCTURE, ROCK SLOPE PROTECTION, SUPPLIER, STRIPING, STRUCTURAL BACKFILL, SWPPP/WATER POLLUTION CONTROL PLAN PREPARATION, TEMPORARY EROSION CONTROL, TRAFFIC CONTROL SYSTEMS, TRAFFIC CONTROL MATERIAL SUPPLIER, UNDERGROUND, VEGETATION CONTROL, WALL (MSE), TRUCKING, WATER TRUCKS, STREET SWEEPING, EROSION CONTROL MATERIAL, IMPORTED BORROW, CLASS 2 AGGREGATE BASE MATERIAL, HOT MIX ASPHALT (TYPE A) MATERIAL, RUBBERIZED HMA (OPEN GRADE) MATERIAL AND RUBBERIZED HMA (GAP GRADE) MATERIAL.

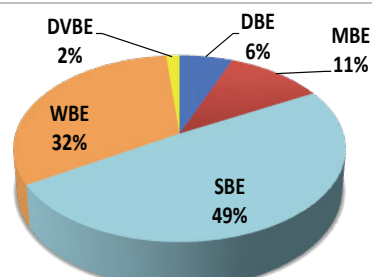
Plans and specifications may be reviewed at our offices located at 11555 Dublin Boulevard, Dublin, CA or 7700 College Town Drive, Sacramento, CA, or at your local Builders Exchange, or reviewed and downloaded from the ftp site at <ftp://ftp%25desilvagates.com:f7pa55wd@pub.desilvagates.com> (if prompted the username is ftp@desilvagates.com and password is f7pa55wd) or from the Owner's site at www.dot.ca.gov/hq/esc/oe/weekly_adv/all_adv_projects.php

Fax your bid to (925) 803-4263 to the attention of Estimator Garry Day. If you have questions for the Estimator, call at (925) 829-9220. When submitting any public works bid please include your DUNS number and DIR number. For questions regarding registration for DIR use the link at: www.dir.ca.gov/Public-Works/PublicWorks.html

If you need DBE support services and assistance in obtaining bonding, lines of credit, insurance, necessary equipment, materials and/or supplies or related assistance or services, for this project call the Estimator at (925) 829-9220, or contact your local Small Business Development Center Network (<http://californiasbdc.org>) or contact the California Southwest Transportation Resource Center (www.transportation.gov/osdbu/SBTRCs). DGC is willing to breakout portions of work to increase the expectation of meeting the DBE goal.

At our discretion, 100% Payment and 100% Performance bonds may be required as a subcontract condition. This will be a PREVAILING WAGE JOB. DGC is an equal opportunity employer.

AUDIENCE PROFILE Small Business Exchange, Inc.





California Sub-Bid Request Ads



Kiewit

Kiewit Infrastructure West Co.
4650 Business Center Drive Fairfield, CA 94534
Attn: Victor Molina • norcal.bids@kiewit.com
Fax: 707-439-7301

Requests sub-bids from qualified California Unified Certification Program (CUCP) certified Disadvantaged Business Enterprise (DBE), Subcontractors, Consultants, and/or Suppliers seeking to participate in the Construction on State Highway in Sacramento County in and near Sacramento from 1.1 Miles South of Elk Grove Boulevard to American River Viaduct Project.

<http://www.dot.ca.gov/obeo/index.html>

Subcontractors and Suppliers for the following project:

**I-5 American River Viaduct Lane Rehab Project
Contract No. 02-0E1804**

**Federal-Aid Project: ACSB11M-005-6(349)E
Owner: Caltrans**

Bid Date: August 9, 2018 at 2:00 P.M.

Disadvantaged Business Enterprises (DBEs)

wanted for the following scopes, including, but not limited to:

AC Surfacing, Aggregate Supply and Install, Bridge Removal, CIDH Piling, CISS Piling, Clear and Grub, Cold Plane AC Pavement, Concrete Barriers, Concrete Pumping, Concrete Reinforcement, Concrete Supply, Core Concrete, Crack and Seat, Data Core, Decorative Railing, Earthwork, Electrical, Erosion Control, Fence Removal and Installation, Grind Existing Bridge Deck, Grind Existing Concrete Pavement, Ground Anchoring, Guardrail, High Friction Surface Treatment, HMA Dike, HMA Paving, Hydraulic Mulch and Dry Seed, Joint Seal, Lighting, Lime Stabilized Soil, Message Signs, Minor Concrete, Misc Metals, Pavement Markings & Striping, Paving Fabric, PCC Materials, Pedestrian Barricades, Pipe Supply, Polyester Concrete Overlay, Precast Concrete, Prepare Bridge Deck Surface, Remove/Relocate/Install Sign Structures, Roadside Signs, Sound Walls, Structural Shotcrete, Traffic Control Systems, Utilities, Vegetation Control, SWPPP, Survey, Biologist, Noise Monitoring, Environmental Compliance, Hazardous Material Abatement & Trucking, Trucking & Hauling, Sweeping, Water Trucks.

Bonding, insurance and any technical assistance or information related to the plans or specification and requirements for the work will be made available to interested certified, DBE suppliers and subcontractors.

Assistance with obtaining necessary equipment, supplies, materials, or services for this project will be offered to interested certified suppliers and subcontractors.

Performance Bond and Payment Bonds may be required for subcontractors and a suppliers bond for suppliers.

Subcontractor and Supplier Scopes are due

August 3, 2018 and Quotes

NO LATER THAN August 8, 2018 at 5 PM.

Plans are available for viewing at our office at our address below and through SmartBidNet (SBN).

All subcontractors that are registered in our SBN database will receive an invitation to bid. Please visit <http://www.kiewit.com/districts/northern-california/overview.aspx> to register your company and to be able to receive bidding information, view plans and specifications.

You can view the plans in our office during regular business hours by appointment.

Performance Bond and Payment Bonds may be required for subcontractors and a suppliers bond for suppliers.

**Davis-Bacon Act Applies
Buy America Requirements Apply
An Equal Opportunity Employer**

CA Lic. 433176
DIR # 1000001147



Kiewit

Kiewit Infrastructure West Co.
4650 Business Center Drive Fairfield, CA 94534
Attn: Victor Molina • norcal.bids@kiewit.com
Fax: 707-439-7301

Requests sub-bids from qualified California Unified Certification Program (CUCP) certified Disadvantaged Business Enterprise (DBE), Subcontractors, Consultants, and/or Suppliers seeking to participate in the Construction on State Highway in Shasta County in and near Anderson from route 5/273 separation to 0.4 Miles South of Churn Creek Road overcrossing Project.

<http://www.dot.ca.gov/obeo/index.html>

Subcontractors and Suppliers for the following project:

**I-5 Shasta County Bridges Project
Contract No. 02-4C40V4**

**Federal-Aid Project: ACSB11M-005-8(359)E
Owner: Caltrans**

Bid Date: August 28, 2018 at 2:00 P.M.

Disadvantaged Business Enterprises (DBEs)

wanted for the following scopes, including, but not limited to:

AC Surfacing, Aggregate Supply and Install, Bridge Removal, Bat and Bird Exclusion Device, CIDH Piling, Clear and Grub, Cold Plane AC Pavement, Concrete Barriers, Concrete Pumping, Concrete Reinforcement, Concrete Supply, Core Concrete, Crack and Seat, CCTV, Crash Cushions, Data Core, Cable Railing, Earthwork, Electrical, Erosion Control, Fence Removal and Installation, Grind Existing Bridge Deck, Grind Existing Concrete Pavement, Ground Anchoring, Guardrail, K-rail, High Friction Surface Treatment, HMA Dike, HMA Paving, Hydraulic Mulch and Dry Seed, Joint Seal, Landscaping, Lighting, Lime Stabilized Soil, Message Signs, Minor Concrete, Misc Metals, Pavement Markings & Striping, Paving Fabric, PCC Materials, Pedestrian Barricades, Pipe Supply, Polyester Concrete Overlay, Precast Concrete, Prepare Bridge Deck Surface, Remove/Relocate/Install Sign Structures, Roadside Signs, Sound Walls, Structural Shotcrete, Traffic Control Systems, Utilities, Vegetation Control, SWPPP, Survey, Biologist, Noise Monitoring, Environmental Compliance, Hazardous Material Abatement & Trucking, Trucking & Hauling, Sweeping, Water Trucks.

Bonding, insurance and any technical assistance or information related to the plans or specification and requirements for the work will be made available to interested certified, DBE suppliers and subcontractors.

Assistance with obtaining necessary equipment, supplies, materials, or services for this project will be offered to interested certified suppliers and subcontractors.

Subcontractor and Supplier Scopes are due

August 24, 2018 and Quotes

NO LATER THAN August 27, 2018 at 5 PM.

Plans are available for viewing at our office at our address below and through SmartBidNet (SBN).

All subcontractors that are registered in our SBN database will receive an invitation to bid. Please visit <http://www.kiewit.com/districts/northern-california/overview.aspx> to register your company and to be able to receive bidding information, view plans and specifications.

You can view the plans in our office during regular business hours by appointment.

Performance Bond and Payment Bonds may be required for subcontractors and a suppliers bond for suppliers.

**Davis-Bacon Act Applies
Buy America Requirements Apply
An Equal Opportunity Employer**

CA Lic. 433176
DIR # 1000001147



Kiewit

Kiewit Infrastructure West Co.
4650 Business Center Drive Fairfield, CA 94534
Attn: Victor Molina • norcal.bids@kiewit.com
Fax: 707-439-7301

Requests quotes/bids from qualified Subcontractor, Service Providers, Consultants, and/or Suppliers seeking to participate in the East Bay Municipal Utility District, South Interceptor 3rd Street Rehab Phase 2 Project in Oakland, CA.

<http://www.dgs.ca.gov>

http://www.dot.ca.gov/hq/bep/find_certified.htm

<http://www.acgov.org/auditor/sleb>

<http://sf-hrc.org> / <http://www.portfoakland.com/srd>

Subcontractors and Suppliers for the following project:

**South Interceptor 3rd Street Rehabilitation
Phase 2 Project**

Specification No. SD-392

Owner: East Bay Municipal Utility District

Bid Date: August 22, 2018 @ 1:30 P.M.

Disadvantaged Business Enterprises (DBEs)

Minority Business Enterprise (MBE), Women Business Enterprise (WBE), Small Business Enterprise (SBE), Disabled Veteran Business Enterprise (DVBE) and all other small/local business enterprises wanted for the following scopes, including, but not limited to:

Aggregates, AC Paving, Anchor Systems, Concrete, Concrete Forming, Concrete Pumping, Concrete Supply, Concrete Reinforcement Supply & Install, Precast Concrete, CCTV Pipe Inspection, Dewatering, Demolition, Excavation, Injection Grouting, FRPM Sliplining Pipe, PVC Liner for Pipe, Street Sweeping, SWPPP, Surveying, Trucking, Water Truck.

Bonding, insurance, and any technical assistance or information related to the plans or specification and requirements for the work will be made available to interested DBE, MBE, SBE, DVBE and all other small/local business enterprise suppliers and subcontractors. Assistance with obtaining necessary equipment, supplies, materials, or services for this project will be offered to interested certified suppliers and subcontractors.

Subcontractor and Supplier Scopes are due

August 17, 2018 and Quotes

NO LATER THAN August 21, 2018 at 5 PM.

Plans are available for viewing at our office at our address below and through SmartBidNet (SBN).

All subcontractors that are registered in our SBN database will receive an invitation to bid.

Please visit <http://www.kiewit.com/districts/northern-california/overview.aspx> to register your company to be able to receive bidding information, Plans and Specifications.

Performance and Payment Bonds may be required for Subcontractors and Supply Bonds for Suppliers on this project.

An Equal Opportunity Employer

CA Lic. 433176
DIR # 1000001147



Warriors Basketball Arena Stays in Lead at Halftime

Continued from page 5

So while early concepts put Chase Center in the center of the site, with the other above-ground structures and features spinning around it, project designers moved the arena closer to the water and placed the two office towers on the opposite side. This opened up space for a protected 3.2-acre public plaza. The arena and office towers were also spaced at least 20-30 ft apart so the structures could shake and bend during an earthquake without hitting each other, Manica says.

Construction began before all designs were completed, a typical approach for sports arena projects, says Trevor DeLong, the project's senior superintendent with Mortenson-Clark. When crews started digging, only the foundations were 100% designed.

"Because of the size and scale of the concrete superstructure and steel superstructure, it takes so much time to build. So there is time to lag the design concurrently along with that," DeLong says.

What Lies Beneath

Digging out 300,000 cu yd of soil for the foundations took five months, DeLong says. "First we needed to start stabilizing the subgrade—you literally can't walk equipment on the bay mud or you'll sink," he says. "You can sink standing in it."

So before beginning excavation, the team built an underground CDSM (cement deep soil mixing) wall by drilling into the ground with a triple auger that injects grout and mixes it with the soil, DeLong says.

"You have to do that first before you start digging the hole, otherwise you're just going to be surrounded by a lake," DeLong says.

The mud was also variable, full of random fill from the site's previous history as a railyard. The team installed 1,500 piles to support the site, drilling to depths up to 150 ft, with the deepest under the arena's concrete cores. Designers adopted a hybrid pile system after discovering that the sand in some locations didn't provide enough friction to support only auger-cast, 24-in.-dia piles, he says. Weaker areas required the deeper, 36- and 48-in.-dia drilled shafts using rebar and concrete.

The site also had subgrades of various depths, DeLong says. The arena's subgrade was about 10 ft deep, while the parking structure's was at 24 ft and the practice court's subgrade depth was 14 ft.

Working so close to the water, the project team chose to encase the site in a "bathtub" rather than install a dewatering system, DeLong says, which could risk dewatering areas outside the property line. Crews poured a concrete working



The project's "boneyard" of steel beams outside the arena. The project's tower cranes must be placed not to interfere with the flight paths of nearby hospital helicopters.

PHOTO BY CHRISTINE KILPATRICK/ENR

surface that became the substrate for a waterproofing membrane on top of it.

Above the working surface is the project's "structural slab on grade"—this concrete slab ranges from 12 to 16 in. thick across the entire 11-acre site, protecting it from the moving water and settling soil. Crews continue to pour the structural slab in bite-size pieces, about 700 cu yd at a time. Most of the slab can be poured before the long-span roof is completed, except for the slab beneath the arena's basketball court.

Race to the Roof

Crews have been working since May to install the roof trusses with plans to set the last of the four main 500,000-lb steel trusses in early August. Only half of each truss can be raised at a time, then joined together and installed. The goal is to enclose the arena by Nov. 1, before winter rains begin, DeLong says.

"Everything we do in terms of sequencing and flow and what preceding work needs to happen is about what is going to be the quickest path to the roof," he says. "That really drives the whole building."

Moving to the top of the arena at such speed required bypassing areas still in design, such as the kitchen, commissary and underground mechanical rooms. Meanwhile, the concrete kept pouring, with eight different concrete subcontractors working on the project. With so many elevated decks and multiple grade changes throughout the site, the team was running three 1,000-cu-yd pours a week.

"We had several weeks this winter where we were pouring 4,000 cubic yards a week of con-

crete, with two ready-mix plants serving the job," DeLong says.

Hemmed In

All this noise and activity affects the project's many neighbors, from UCSF students and residents at the surrounding condos to patients, families and staff at the UCSF Medical Center. Hospital helicopters frequently fly over the site, posing a challenge for placing tower cranes.

"The helicopters go right over the top of the job. All of the crane activity had to be planned and coordinated for height so as not to create crane conflicts but also stay below the flight path," DeLong says.

Scheduling was also an issue, says Bryan. Daytime construction affected local businesses, but nighttime work disturbed the many medical students living across the way in Hearst Towers. The contractor amended its schedule, he says, to accommodate final exams.

Mission Bay was first developed as an enclave for biotechnology firms, so the project team holds monthly meetings with the biotech community, which includes companies like Bayer Corp. and FibroGen as well as UCSF. But with a project like this, drawing basketball fans, office workers and shoppers to the area, the neighborhood discussions won't end with the construction.

"Those are efforts that we at the Warriors and Chase Center will be dealing with for the life of the building," Bryan says.

SOURCE: www.enr.com



California Sub-Bid Request Ads



Sukut Construction seeks quotes from certified & qualified DBE/SBE/MBE/WBE/SBRA/LSAF/HUB Subcontractors, Suppliers, and Service Providers for the following (but not limited to) work:
Pipeline Materials, Aggregate, Ready Mix Concrete, AC Cold Mill, Traffic Control, Asphalt Paving, Striping, SWPPP

RECYCLED WATER PHASE III PIPELINE EXPANSION SEGMENT 5

Contract No. 5208-B

PWS19-491UTIL

Various Locations in Carlsbad, San Diego County, CA

Carlsbad Municipal Water District

BID DATE August 29, 2018 @ 2:00 p.m.

Sub & Vendor Bids Due Prior

Sukut Construction, LLC

4010 W. Chandler Avenue, Santa Ana, CA 92704

Contact: Robbie Zwick

Phone: (714) 540-5351 • Fax: (714) 545-2003 • Email: estimating@sukut.com

Plans/specs are available for viewing at our office by appointment, or via Sukut FTP. Subcontractors must be prepared to furnish 100% performance and payment bonds and possess current Contractor's License, DIR registration, insurance and workers' comp coverage. Sukut Construction will assist qualified subcontractors in obtaining bonds, insurance, and/or lines of credit. Subcontractors/Vendors will be required to sign Sukut's Standard Subcontract/Purchase Order. Copies are available for examination. Please contact Sukut Construction for assistance in responding to this solicitation.

Sukut Construction's listing of a Subcontractor in its bid to the agency is not to be construed as an acceptance of all of the Subcontractor's conditions or exceptions included with Subcontractor's price quotes. Quotations must be valid for the same duration as specified by Owner for contract award.

Sukut Construction, LLC
 An Equal Opportunity Employer



An Equal Opportunity Employer is requesting quotations from all qualified Professional Services, Sub-Contractors, Material Suppliers, and Trucking, DBEs and SBEs are encouraged to participate, for the following project:

Contract No. 04-229114

I-680/SR 4 INTERCHANGE IMPROVEMENTS - PHASE 3

FOR CONSTRUCTION ON AND ADJACENT TO STATE HIGHWAY IN CONTRA COSTA COUNTY IN MARTINEZ AND CONCORD FROM 0.01 MILE EAST OF MILANO WAY OVERCROSSING TO 0.6 MILE EAST OF ROUTE 4/242.

Bid Closing Date: August 23, 2018 @ 2:00 PM

DBE/SBE GOAL: NO SPECIFIC GOAL IS ESTABLISHED

CONTACT:

Robert Rosas

Brosamer & Wall Inc.

1777 Oakland Blvd, Suite 300 • Walnut Creek, California 94596 • PH: 925-932-7900 • FAX: 925-279-2269

PROJECT SCOPE:

Brosamer & Wall Inc., is requesting quotes from all qualified subcontractors and suppliers including certified DBE/SBE firms for all items of work type, including but not limited to:

- AC DIKE
- AGGREGATE BASE
- AGGREGATE SUBBASE
- AGGREGATE SUPPLY
- ASBESTOS COMPLIANCE PLAN
- ASPHALT OIL SUPPLY
- ASPHALT PAVING
- CAST-IN-DRILLED-HOLE (CIDH)
- CLEAR AND GRUB
- CONCRETE AGGREGATE SUPPLY
- CONCRETE BARRIER ANCHOR BLOCK
- CONCRETE BARRIER TYPE 60
- CONCRETE BARRIER TYPE 736
- CONSTRUCTION AREA SIGNS
- CONTINUOUSLY REINFORCED CONCRETE PAVEMENT (CRCP)
- DEMOLITION
- DRILL AND BOND DOWELS
- DRIVEN PILE
- EARTHWORK/GRADING/RDWAY EXC.
- ELECTRICAL
- EROSION CONTROL
- FENCE
- IRRIGATION - PERM & TEMP
- JOB SITE MANAGEMENT
- JOINT SEAL
- JOINTED PLAIN CONCRETE PAVEMENT
- K-RAIL
- LANDSCAPE
- LEAD COMPLIANCE PLAN
- MIDWEST GUARDRAIL SYSTEM
- CONCRETE
- NOISE MONITORING
- PAINT - CONCRETE
- PERMANENT STRIPING/MARKING
- PRECAST GIRDER
- REBAR
- REMOVE CONCRETE PAVEMENT
- REMOVE CULVERT
- REMOVE/ADJUST INLETS
- ROADSIDE SIGNS
- ROCK SLOPE PROTECTION
- SIGN STRUCTURES
- STREET SWEEPING
- STRUCTURAL BACKFILL
- STRUCTURE CONCRETE - RETAINING WALL
- STRUCTURE CONCRETE-BRIDGE
- SURVEYING
- SWPPP
- TEMPORARY STRIPING
- TRAFFIC CONTROL
- TRUCKING
- VIBRATION MONITORING
- WATER/CREEK DIVERSION

For the complete list of the Actual Project Bid Items go to: <https://www.bidexpress.com/businesses/14014/home>

Plans and specifications can be viewed at our office located at 1777 Oakland Blvd Suite 300, Walnut Creek, Ca. 94596 or at no cost from Bid Express (<https://www.bidexpress.com/>). B&W will also make plans electronically please email rosas@brosamerwall.com for free online link.



Proven Management, Inc.
 225 3rd Street, Oakland, CA 94607
 Phone: 510-671-0000 • Fax: 510-671-1000

PMI requests proposals/quotes from all qualified and certified Small Business (SB) subcontractors, suppliers, and truckers for the following project:
**UNION CITY INTERMODAL STATION PHASE 2A
 BART STATION IMPROVEMENTS
 BART #01VM-120
 Bids: 08/28/2018 @ 2 pm
 SB GOAL - 23%**

The work in this contract includes but is not limited to: Selective Demo; Lead-Based Paint Abatement; Hazmat Abatement; Concrete Restoration; Portland Cement and CIP Concrete; Concrete Forming; Falsework; Shotcrete; Concrete Topping; Non-Shrink Grout; Masonry; Metal Welding; Structural Steel Framing; Architecturally Exposed Structural Steel; Metal Decking; Cold-Formed Metal Framing; Metal Fabrications; Decorative Metal; Thermal & Moisture Protection; Modified Bitumen Roofing; Rebar; Escalators; Canopies; Signage; Lighting; CCTV; Communication System; Cementitious & Intumescent Fireproofing; Metal Doors & Frames; Alum Doors/Frames; Access Door & Panels; Alum Windows; Door Hdwr; Glazing; Louvers; Tile Replacement & Restoration; Portland Cement Plaster; Gypsum Board; Tiling; Modular Metal Ceiling System; Aluminum Panels; Special Coating; Painting; Anti-Graffiti Coatings; Illuminated Box Signage; Escalators; Vibration Isolation & Seismic Control for Facility Services; Fire Suppression Standpipe; Wet-Pipe Sprinkler System; Plumbing; Sanitary; Storm Drainage; HVAC Ducts, Casings; Fans; Electrical; Telephone & PA Systems; Fire Detection & Alarm System

PMI will provide assistance in obtaining necessary bonding, insurance, equipment, supplies, materials or other related services. 100% Payment & Performance bonds will be required from a single, Treasury-listed surety company subject to PMI's approval. PMI will pay bond premium up to 1.5%. Subcontractors awarded on any project will be on PMI's standard form for subcontract without any modifications. For questions or assistance required on the above, please call 510-671-0000. PMI is signatory to the Operating Engineers, Carpenters, and Laborers Collective Bargaining Agreements.

We are an Equal Opportunity Employer



Looking for
**Subcontractors, Vendors,
 and Suppliers?**

Call 1-800-800-8534
 or visit us at www.sbeinc.com

**Advertise your Sub-Bid Requests
 in the Small Business Exchange.
 With a monthly readership
 of 75,000, SBE reaches a
 diverse audience, cutting
 across ethnic and gender
 lines as well as traditional
 industry segments.**